

Emirates



PRE
Qualification



المستدامة للصناعات
AL MUSTADAMAH
IND. LLC ذ.م.م

An ISO 9001:2015
ISO 14001:2015
OHSAS 18001:2007
Certified Organisation



Tel : +971 6 522 1490
Fax: +971 6 522 1494



info@mustadamah.com
www.mustadamah.com



Al saja'a Industrial Area,
P.O. Box : 63144, Sharjah - U.A.E.

© 2017 All Rights Reserved - mustadamah.com

Contents

01 P:01

INTRODUCTION

02 P:02-04

KEY PERSONNEL

- MANAGEMENT
- STAFF

03 P:05

ORGANIZATIONAL CHART

04 P:06

OUR SERVICES & TECHNOLOGIES

05 P:07

FACTORY RESOURCES

06 P:08

PROJECTS AND CLIENTS

07 P:09

OUR PROCESS AND APPROACH

08 P:19

LIVE PROJECTS

09 P:44

INDUSTRIAL LICENSES

10 P:45

ISO CERTIFICATES

11 P:47

COMMITMENT TO GREEN CONSTRUCTION

12 P:48

ASSOCIATE ORGINAISATION

13 P:49

LOCATIONS - GPS COORDINATES

Introduction

01

Further to success stories in Saudi Arabia , Bahrain and Qatar, our venture in UAE, the Al Mustadamah Industries , focuses on regional construction requirements. The workshop in Al Saja'a Industrial Area, Sharjah being strategically placed in the UAE, near the numerous development sites reducing the geographical distance of travel for the finished product as well as raw materials, resulting lowered carbon footprints, better coordination, regular interaction and reach to the advanced technologies, keeping pace with the new designs and the green building movement in Middle East. Al Mustadamah Industries offering complete solutions in manufacturing and installation of way finding architectural signage, turnkey constructions of Shops and interiors including FF&E, ATM Drive Up and Kiosks, POS Displays, Building Wraps, Hoardings and Billboards.

Al Mustadamah Industries LLC is accredited & certified it's compliance to ISO 9001: 2015, ISO 14001: 2015 & OHSAS 18001: 2007.

Al Mustadamah Industries LLC is a member of US Green Building Council.

We offer sustainable solutions in offering Wayfinding and Architectural Signage, Shop Fit outs & Interiors. Whether our clients are working toward obtaining LEED certification or Pearl-Estidama ratings, or they are simply looking for ways to promote and create a more green friendly environment, we want our customers finding our contributions aligned to their effort, an Integrated design and built and project management approach in design, manufacture and supply of signage cladding and fit outs promoting green construction. With a name "Al Mustadamah" the Arabic synonym for "Sustainability", we got to be environmentally conscious! And we are! See our sustainable philosophy and company practices.

Al Mustadamah Industries LLC is on the forefront of the design, manufacturing and installation of personalized and sustainable architectural signs and graphics. We specialize in understanding materials and processes available for sustainable sign solutions. A one stop solution for Energy and Environmentally Designed Signage and Fit Outs.

Al Mustadamah Industries LLC, is the perfect resource for architects and developers involved in green development projects. Our signs are not only built to comply the sustainability requirements, but they can also serve as Industry benchmarks in Middle East. We can create a comprehensive signage program that describes the attributes and benefits of green buildings. The inclusion of the educational element in educating the user may contribute to one point (Green Building Education) in LEED certification.

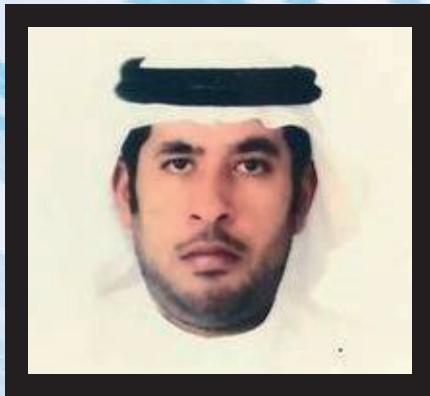
Innovative ways to use environmentally friendly materials are evolving every day. We proudly bring the concept in Middle East with our personalized approach reflecting in our works.

Our reach in entire Middle East in executing project of various size, makes us your preferred choice.

Key Personnel

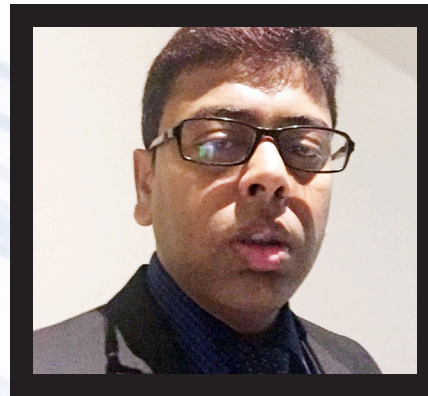
02

MANAGEMENT



**ABDELAZIZ SULTAN
THANI SAEED ALFALASI**
Chairman

Mr. Abulaziz Sultan Alfalasi, the Chairman of Al Mustadamah Industries LLC, is a dynamic Emirati Businessman at the helm of the affairs. His expertise in Business Development, Sustainability and Banking gives the an edge to Al Mustadamah Industries LLC with his leadership.



PARIJAT MUKHERJEE
Executive Director

A Graduate Mechanical Engineer with over 14 years of hands on experience in Construction Managment, Manufacturing, Architectural Fabrication, Project Management in Design, Way finding Strategy, Manufacturing of Signage, Printing and Graphics in the several Architectural Landmarks of Mid East and Subcontinent. Project Management, Detail Engineering and Design being his forte. Parijat is Member of **PMI** and **ASME**.



MOHAMED SALEEM KUNDARPUR
BOD, Director Engineering -
Civil and Structural

Mohamed Saleem, a Civil and Structural engineer by Profession and having more than two decades experience in handling Turnkey Interior and Construction Projects in State of Qatar brings in rich professional exposure from Concept to commissioning. His detail knowledge in Estimation, Engineering design, Project and Contract management with his entrepreneurial abilities are our asset to cherish.

**MUNAWWAR HUSSAIN**

BOD, Director -
GCC Business Development

A Graduate Engineer with a decade of experience in Signage industry & is responsible for Developing sales plans and budgets for achieving sales goals and approve or reject sales contracts based on factors such as profitability. Also involved in planning, coordination and control of manufacturing processes.

**ABDUL KADER MEHAMOOD**

Director

Mr. Abdul Kader Brings in his decades long experience in Construction Projects in G.C.C Countries. His expertise in planning and operation in Interior and Structural Construction Projects are an asset to Al Mustadamah Industries LLC

TEAM



Salim Mongale
Production Manager

A Graduate Engineer having experience in manufacturing of Art Metal work, Signage and joinery. He specialises in production planning and control and industrial manufacturing.

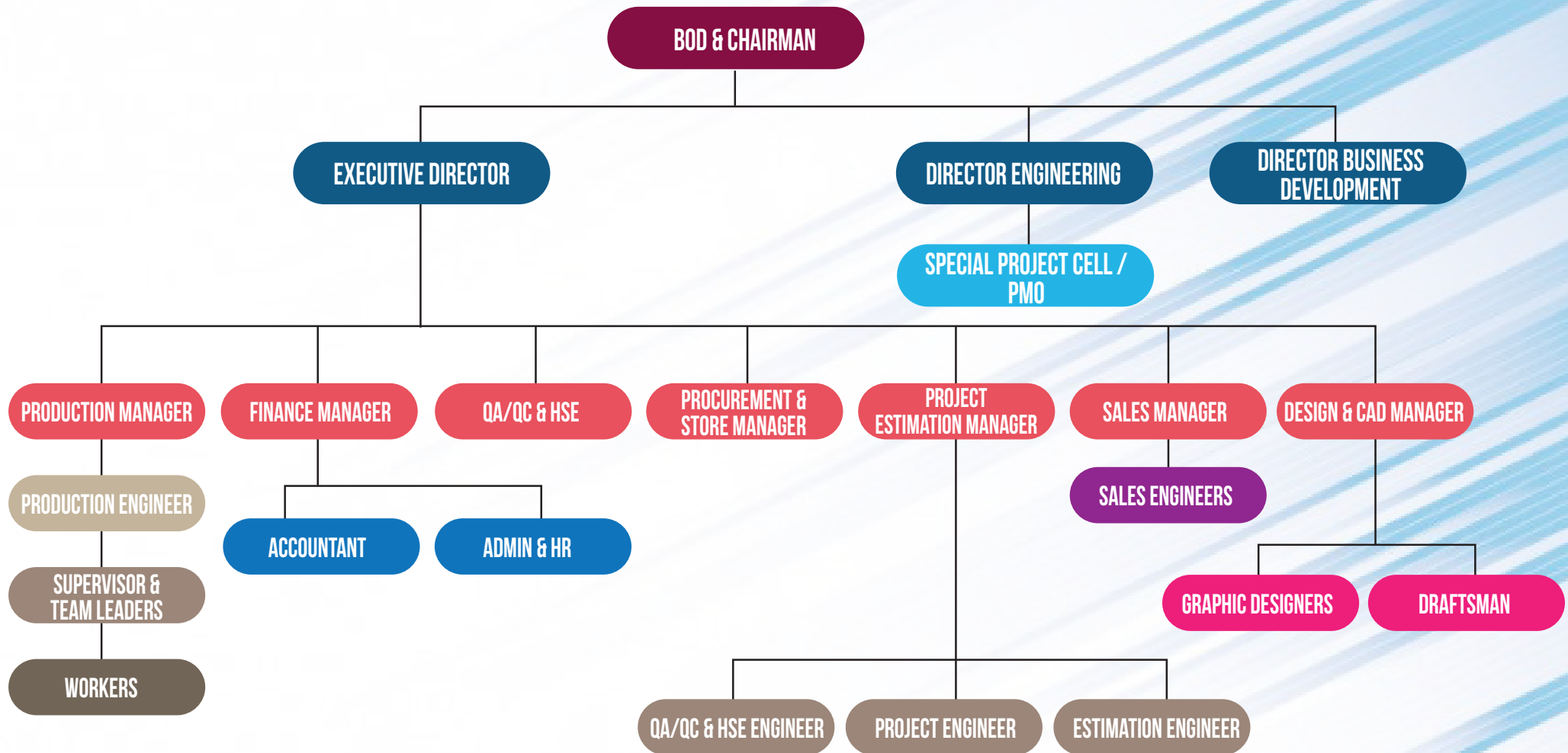


Abdul Wahid
Creative Design Head

A creative designer having a decades of lead design experience in various wayfinding and key architectural projects in the region having worked with the most prominent signage manufacturing organizations as well as wayfinding design consultants across UAE, Bahrain, Saudi Arabia and Indian Subcontinent

Organizational Chart

03



Our Services & Technologies

04

PRODUCTS

- Wayfinding and Architectural Signage
- Retail Signage
- Turn Key Interior and Gypsum work
- ATM Kiosks - Drive Throughs and Walk Ups
- Artmetal Work
- POS Display Stands, Gondolas and Exhibition Stands
- Large Format Printing, Vehicle and Building Wrap
- Signage Maintenance

We help clients design, implement and maintain high impact, cost effective signage and communication solutions in Dubai and across the UAE. From interior to exterior store and branch signage, kiosks and Pylon, Hoardings, Promotional material, point of sale stands, window graphics, vehicle and transport graphics and more, we have the experience and the technical know-how to deliver the best solutions to meet your requirements.

OUR PRODUCTION DEPARTMENTS

1. Design Studio
 - Creative Conceptualisation
 - Graphic Design
 - Structural Drawings
 - Technical and Production Drawings
2. Fabrication
 - Metal Fabrication
 - Die Making
 - Plastic Fabrication
3. Welding
 - Steel Welding
 - Aluminium Welding
4. Cutting Services
 - Water Jet Cutting
 - CNC Punching
 - Laser Cutting
 - Router Cutting
 - Shearing
 - Die Cutting
5. Painting Services
 - Spray Painting
6. Printing Services
 - Large Format Digital Printing
 - Screen Printing
7. Vinyl and Graphic Application
 - Computerised Plotting and Vinyl Cutting
 - Sticker Weeding and Application
 - Mounting
 - Lamination
8. Carpentry Services
 - Wood Structures
 - Packaging and Crating
 - Exhibition Support Services
9. Neon Fabrication

Facilities



We are proud to show case our state of the Art facilities in offering turnkey project solutions.

Below are the list of machineries that we carry .

FABRICATION EQUIPMENT

- CNC Router - Bed Size: 1.5 M X 3 M
- For Aluminium , MDF , Acrylic , Marble Wood Cutting.
- CNC Laser - Bed Size: 1.2 M X 2.4 M - For S. Steel and Acrylic Cutting.
- Engraving Machine (For Metal, Acrylic, Glass). Bed Size 1.2 m x 0.6m
- CNC Plasma Cutter - Bed Size - 3m x 1.5 m for Metal Cutting.
- CNC 5 Axis Heavy Duty Hydraulic Metal Shearing 3m cutting ability.
- CNC 5 Axis Hydraulic Press Brake, 3 M Input
- NC Hydraulic Roller Press, 3 M Input
- Hydraulic Profile Rolling Machine
- Mechanical Shear. 2.4 m bed
- Mechanical Press Brake, 2.4 m bed
- Mechanical Rolling 2.4 m input.
- ADA Braille Engraver with licensed Braille software.
- Acrylic Vacuum Forming Machine. Bed Size 3m x 2m.
- Temperature Controlled and Dust Proof induce Draught Automotive paint booth.

DIGITAL PRINTING EQUIPMENT

- HP 6200Z Indoor Media Digital Printer (Inkjet)
- 3.2 m Bed width Vutek3630 Solvent Digital Printing
- 2.6m Latex 28500
- Heat Seam welding machine
- Seal Cutting Pro, Output: 1.5 M, Since 2005
- Pressure Sensitive Cold Laminating Equipment
- Seal 62-S, Output: 1.6 M
- Jaguar Vinyl Plotter

OTHER GENERAL FABRICATION & SUPPORT MACHINES

- 8nos Miller XMT 425 Mig, Tig and ARC Welding Machine
- Power Press w/ Adjustable Stroke for laminate pressing
- Universal Carpentry Saw- 5 in one - 2 nos
- Univrsal Drilling Machine
- ACP Grooving Machine
- Diamond Polisher/ Edge Polishing on Acrylic
- Acrylic Wire Bending
- CNC Letter Moulding
- Polishing and Buffing Machine
- Belt Sanders
- Arc Welding
- S.Steel TIG Welding Machines
- Band Saw
- Forklift
- Sandblasting
- Diesel Generators
- Compressor with Dryer
- Handtools, scaffoldings , safety harness
- Masterchrome to do Chrome on Any surface

Projects and Clients

06

- **Qatar Foundation** - Signage for Qatar Academy Schools
- **Al Rajhi Bank** - ATM Drive Ups and Branch Signage across KSA
- **Bank Al Jazira** - ATM Drive Ups Across Saudi Arabia
- **Riyad Bank** - Identity Signage and ATM Drive ups and Surrounds across KSA
- **Saudi Hollandi Bank** - ATM Drive Ups and Fascia Signage Across KSA
- **United Bank Limited** - Full Fit out work for Doha Cornish and Al Khor Branch
- **Mashreq Bank, Doha** - Construction of Interior Fit out - Palm Tower, Renovation of Ramada Branch, Full Fit Out Works for Centralised Sales Office at C-Ring Road Branch, FF&E - TVR Branch, Dealing Room Interior for Amwal Tower - 1 st Floor Admin Bldg.
- **HSBC Middle East** - Full Fit out works for ATM Rooms, Modifications and Fit Outs at Salwa Branch, All Maintenance Work for Branches and staff quarters, Refurbishment works for card centres.
- **Qatar Islamic Bank** - Refurbishment works for All types of ATM Rooms, New ATM drive ups, Surround, FF&E, Interior works at branches
- **Standard Chartered Bank** - All ATM Works , Maintenance works for Branch and Staff Quarter
- **International Bank of Qatar** - All External Facade Paint treatments , All Turnkey works for Drive up and Lobby type ATM including electrical civil etc.
- **Steel Tech Company WLL** - Construction of Steel Factory at Mesaieed Industrial City, Doha.
- **Quality Food and Services WLL** - Construction of G+2 Food Production Factory and Guard Room at New Shanaiah, Doha .
- **GAIT Industries** - Design and Construction of Heavy Duty Concrete Chimneys and Civil Work, France
- **Foure Lagadec** - Construction of Warehouse Facilities at Ras Al Affan, France
- **Mr.Saeed Saad Al Subaee (Private)** - Construction of G+3 labour accommodation at 45 Street, Shaniyah, Doha.
- **Qatar Airways** - Construction and Erection of high frequency Antenna with 30 mtr Tall steel Tower Truss
- **Abdullah Abdul Ghani & Bros Co WLL** - Construction of Showroom and Quick Service Centre for Toyota- various places in Doha.
- **Qatar Foundation** - Full Fit out works at Her Highness Offices and VIP Toilets.
- **Shaikh Jassim Mohammed Al Thani** - Construction of 10 workshops with office Buildings at Street 39, Industrial Area, Doha
- **Shaikh Fahad Bin Ali Al Abdullah Al Thani** - Hard Landscaping work for Villa in Rayyan .
- **Qatar Al Attiya Intl . Group** - Construction of Workshop facilities
- **TISSCO** - Refurbishment of showroom with all Fit Outs at Al Mansoura
- **Sharaf Dg** - Interior Fit out works at Ezdan Mall
- **GRK Store** - Turn key Interior FF&E at Mall of Qatar
- **Alawwal Bank** - Change of Identity to Alawwal Bank across KSA
- **Bank Al Bilad** - ATM Drive Ups across KSA
- **Saudi British Bank (SABB)** - ATM Drive ups and Surrounds Across KSA
- **Barwa Bank** - Total Solutions of ATM Booths including supply of ATM Kiosks.
- **Qatar National Bank** - Construction of Drive Up ATMs, Full Fit Out works
- **Q-Tel** - All works for Kiosks
- **IBERDROLA** - Construction of Store for Hazardous Chemical
- **Qatar University** - Wayfinding Signages
- **Toy Store** - Interior Fit Out works at Ezdan Mall
- **REEBOK Store** - Turnkey Interior and FF&E in Doha Festival City

Our Process And Approach

07

(We are an ISO 9001:2015, ISO 14001:2015, OHSAS 18001:2007, Certified Organisation)

OVERVIEW

At mustadamah, our ultimate objective is to create a unique and distinct environment for our clients and we go beyond the traditional solutions that many of our competitors offers.

Aligning itself with the ISO 9001 promotes the process approach to managing mustadamah as a series of interlinked processes. The description of the process approach is informational and does add requirements relevant to each project we engage.

PROCESS






Our interacting process is a set of activities that uses resources (people, machines, etc.) to transform inputs into outputs. The process approach considers the interaction between these processes, and the inputs & outputs that tie these processes together. The output of one process becomes the input of another.

SIGNAGE DESIGN & BUILT WITH WAY FINDING STRATEGY- METHODOLOGY

Signage design is not only form of communicating the brand or development project but it is a powerful medium to communicate the user and helps them to understand the construction theme also serving communicating the message and reinforcing the brand image. Believing this, our quality design processes would always begin by understanding our clients' core value and spirit and the core proposition and then translating the design and/or corporate identity and communications into physical forms.

The key is to develop the right design and way finding strategy and then executing the right design solution that will communicate the identified point of differences of the brand identity or the project.

DISCOVER 	DEFINE 	DESIGN 	DELIVER
RESEARCH & ANALYSIS <ul style="list-style-type: none"> • Project Brief • Management Interview • Business Data • Market Dynamics • Audits • Trends • Research 	DEVELOP & DEFINE <ul style="list-style-type: none"> • Target Audience Profiling • Future Scenarios • Indirect Competitor Scenarios • Future Brand Positioning • Brand Essence • Strategic Architecture • Signage Design Creative Direction 	BRING TO LIFE <ul style="list-style-type: none"> • Conceptual Explorations • Visual Expression • Look And Feel • Signage Design And Orientations • Feasibility And Validation • Schematic Design Applications 	IMPLEMENTATION <ul style="list-style-type: none"> • Detailed Design Applications • Roll-Out Planning • Artwork • Programme Implementation • Evaluation And Testing • Signage Standards & Guidelines

BESPOKE FABRICATION DESIGN & BUILT WITH WAY FINDING STRATEGY

The below chart will demonstrate the activities flow pertinent to the relevant. The next section will illustrate our methodology on how we intend to manage this project. This methodology is based on the procedure define by our quality management system.

STAGES	INCEPTION TO PRELIMINARY DESIGN	DESIGN DEVELOPMENT & DOCUMENTATION	TENDER	CONTRACT ADMINISTRATION	POST CONTRACT
KEY ACTIVITIES	Inception	Internal Master Schedule	Tender	Site Coordination	Post Contract
	Project Programming	Detailed Design Development	Documentation	Follow Up Work	Inspections
	Concept Design	Presentation To Client	Tender Interview	Hand Over	Hand Over
	Presentation To Client	Documentation Rectification	Tender Award		
	Schematic Design	Final Check			
	Presentation To Client	Documentation			

PROJECT MANAGEMENT AND PLANNING

Al Mustadamah applies the principles guided by Project Management Body of Knowledge under the frame work outlined by Project Management Institute Framework.

We consistently organize and manage programs and projects by identifying, prioritizing and selecting appropriate plan, coupled with Planning Methodology to support the successful project execution.

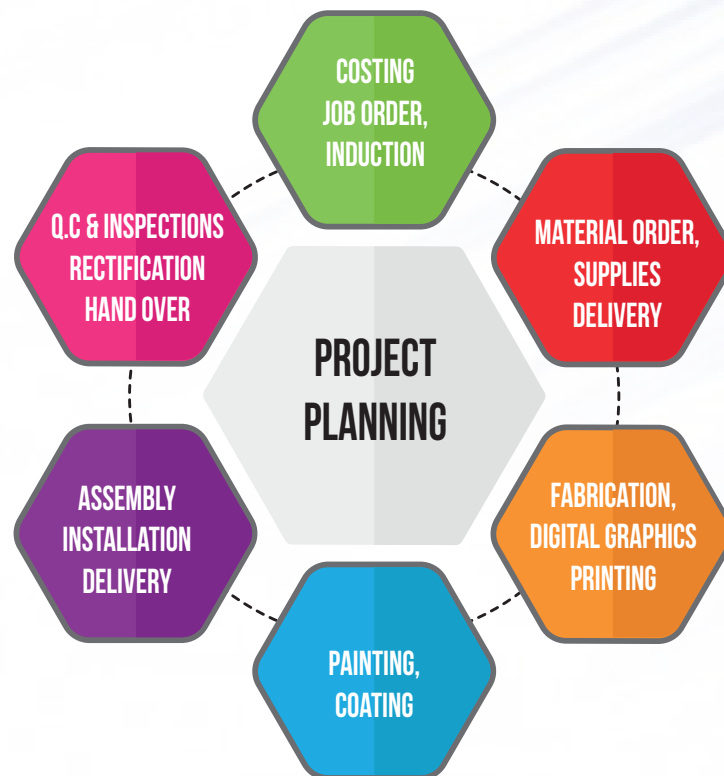
Our Project Execution and Planning Methodology are standardized and measurable, and it organizes work through detailed plans that are based on defined & agreed-upon client requirements & objectives.

PROJECT MANAGEMENT AND PLANNING KEY ACTIVITIES:

- Detailed Survey of Locations
- Formulation & presentation of Shop Drawing - site specific
- Material Submittals & Material sample Approval (if required by the dealer for a specific material not covered under General Contract)
- Approval of Shop Drawings
- Fabrication in co-ordination with the Project Manager as per Shipment (OPTIONAL)
- Erection Element (OPTIONAL)
- Commissioning (OPTIONAL WITH ERECTION)
- Handover

PROJECT MANAGEMENT AND PLANNING

To assist the project execution and planning, we employ a framework to identify the deliverables, schedule of tasks, and measure task performance, identify and mitigate risk, resolve issues, and manage proposed changes to project scope, schedule, and cost. We continuously monitor schedule, costs, and resources to ensure that deliverables are consistent with our Client's time, budget, and quality objectives. budget identification. The designed project controls focus on accountability & responsibility, define information flow,



QUALITY PROCEDURE AT AL MUSTADAMAH

PROJECT SCOPE

These works are summarized as follows:-

Supply and Installation of Signage as per the Tender Package.

The locations on site where the works are to be carried out are:- As per the Tender Package & Approved Drawing whichever is final.

Anticipated start date as per the Approved Schedule.

Sequence of works for all areas as per current program

- a) Shop Drawings and Design Engineering
- b) Development of material samples and sample approval
- c) Production and installation

DELIVERABLE DESCRIPTION/DDS

Followings are the Deliverables of this Project, document wise-

Supply and Installation of Signage as per the Tender Package.

The locations on site where the works are to be carried out are:- As per the Tender Package & Approved Drawing whichever is final. Anticipated start date as per the Approved Schedule.

Sequence of works for all areas as per current program

- | | | | |
|---------------------------------|----------------------|-----------------------------|---|
| 1. Project Schedule | 5. HSE Plan | 9. Last Payment Certificate | 13. Discharge letter |
| 2. Method Statement | 6. Site Tests | 10. Taking Over Certificate | 14. Operation and Maintenance Manual |
| 3. Technical Dossier | 7. As build Drawings | 11. Insurances | 15. Manufacturer Listing of recommended Spare Parts |
| 4. QA/QC Plan and Audit reports | 8. Contract Document | 12. Warranties | |

QUALITY CONTROL PROCEDURE

- 1. Production Identification & Traceability**
- 2. Materials Approval**
- 3. Inspection and Test Plan**
- 4. Work Method Statements**
- 5. Inspection of Incoming Material**
- 6. In-process Inspection at factory**
- 7. Site Inspection**
- 8. Works/ Material Handover**
- 9. Sampling & Testing of Materials**
- 10. Non Conformance Reports (NCR)**
- 11. Monthly QA/QC Report**

QUALITY ASSURANCE PROCEDURES

- 1. Internal Quality Audits**
- 2. External Quality Audits**
- 3. Third Party Quality Audits**

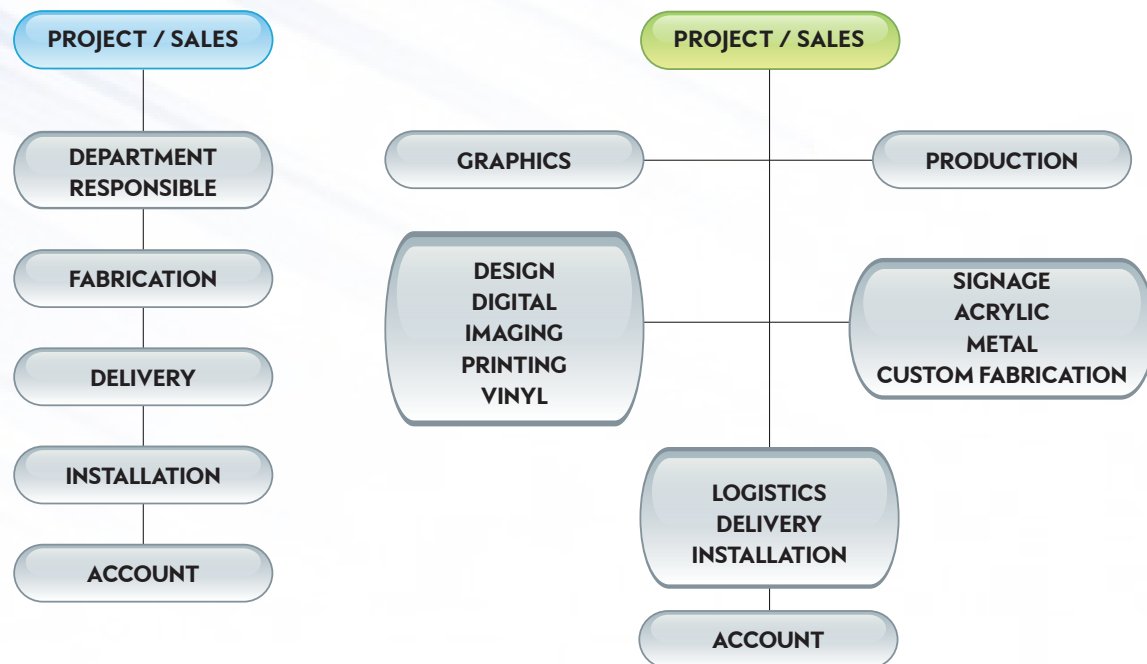
PROJECT CONSTRUCTION PROGRAMME

All incoming projects follow pre-determined guidelines set forth by the Production Planning Control (PPC) manager in conjunction with the Sr. Project Manager, Design and Cost / Value Engineers by understanding the needs of the client we can determine what options can be offered to achieve the program needs.

Additionally, by clearly understanding the unique requirements & specifications set forth by the client or as agreed upon for each different project, Gantt Charts (Timeline Charts) are formulated to ensure timeliness & cost effective material usage to comply with the budgetary requirements.

Please see: Project Implementation Life Cycle Chart illustrated below to give you an idea of what steps are taken for managing production and installation of projects.

GENERAL PRODUCTION WORK FLOW CHART



MANUFACTURING AND INSTALLATION PROCESS

When a new program is planned for production and implementation, and is received by the UCF, the following process is adopted for ensuring production manufacturing.

- For installation the company uses the in house, install team or for regional implementation it draws on prequalified regional installation companies who handle installations as per determined schedules.
- All stages below will be monitored and reviewed through periodical progress meetings chaired and coordinated by the Sr. Project Manager, PACE Lead, and PPC Manager and the appropriate division managers accordingly.

KEY TERMS

PACE: Project and Cost Engineering | PPC: Production Planning Control | BOM / BOL: Bill of Materials / Bill of Lading

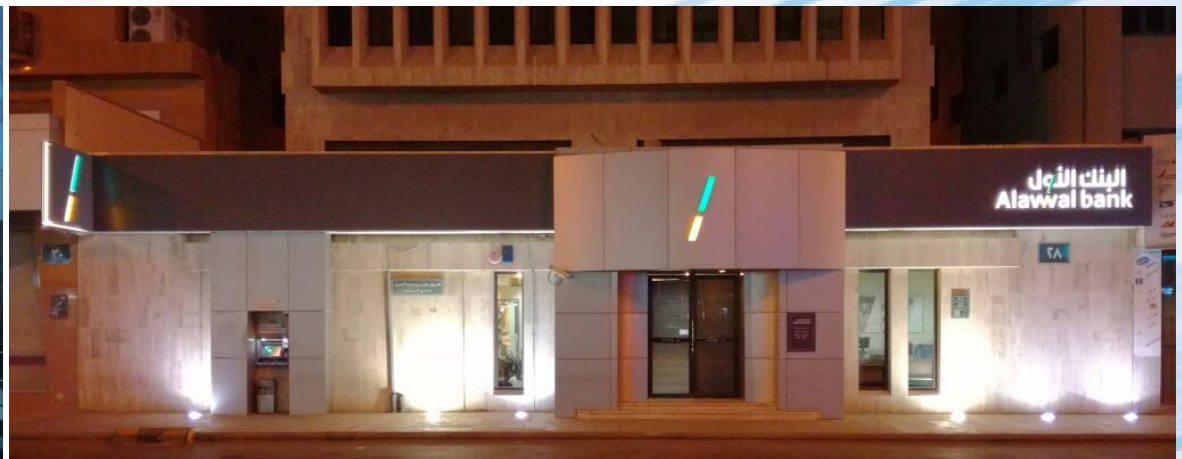
PHASES	RESPONSIBILITY	INPUT / FEEDBACK TO
INFORMATION PHASE › Program requirements › Site conditions › Due dates › Budget limitations › Installation permits if needed	CLIENT / SALES / PACE / SR. PROJECTMANAGER	PACE / PPC / SR. PROJECT MANAGER

PHASES	RESPONSIBILITY	INPUT / FEEDBACK TO
DESIGN PHASE <ul style="list-style-type: none"> › Site measurements › Prototype (if required) › Design shop drawings › Fabrication drawings › Artwork › Installation methodology › Packing details / specifications › BOM/BOL › Shipping documentation › Product specifications › Material availability › Subcontractor evaluation › Project Gantt chart › Identify design team 	PACE / PPC/ DESIGN & ART DEPARTMENT, which includes support staff as needed	CLIENT & OPERATIONS TEAM /LOGISTICS / SR. PROJECTMANAGER
PRODUCTION PHASE <ul style="list-style-type: none"> › Identify production team › Allocate resources › Process Gantt chart › Define quality periods › Define production & installation control factors › Initiate production › Coordinate installation schedule › Periodical progress / QA & QC 	PPC	PRODUCTION / PACE / SR.PROJECT MANAGER / CLIENT
DELIVERY / INSTALLATION PHASE <ul style="list-style-type: none"> › Documentation & action derived from approvals & client communications › Gantt Charts to indicate shipping and installation scheduling › Products to shipped or delivered onsite for installation, perGantt Charts. 	PACE / LOGISTICS	PPC / INSTALLATION SUBCONTRACTOR if needed / SR. PROJECTMANAGER

Live Projects

08

BANK FASCIA



BANK FASCIA



BANK FASCIA





BANK FASCIA



BANK FASCIA



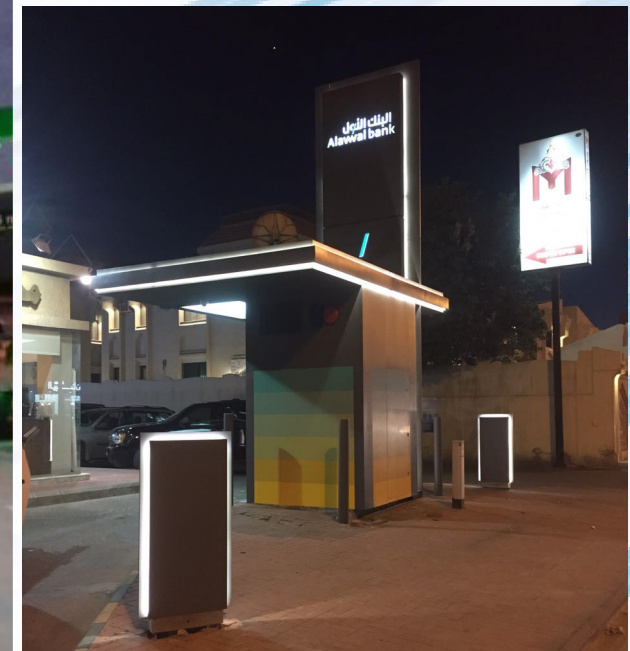
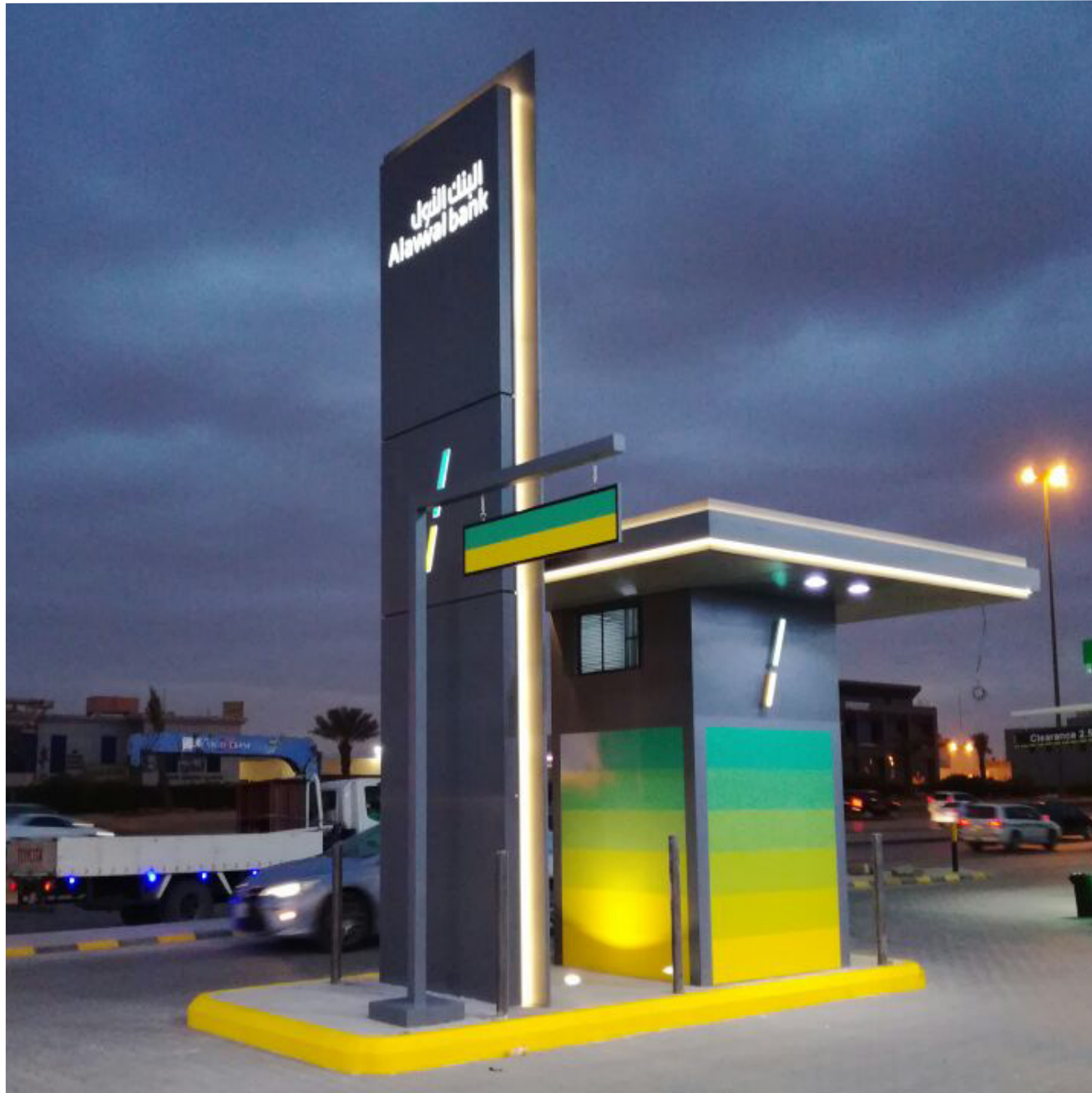
BANK ATM



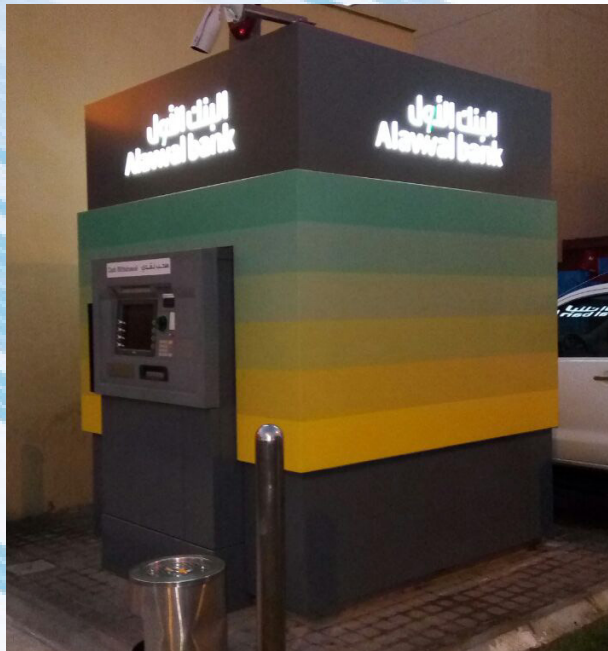
BANK ATM



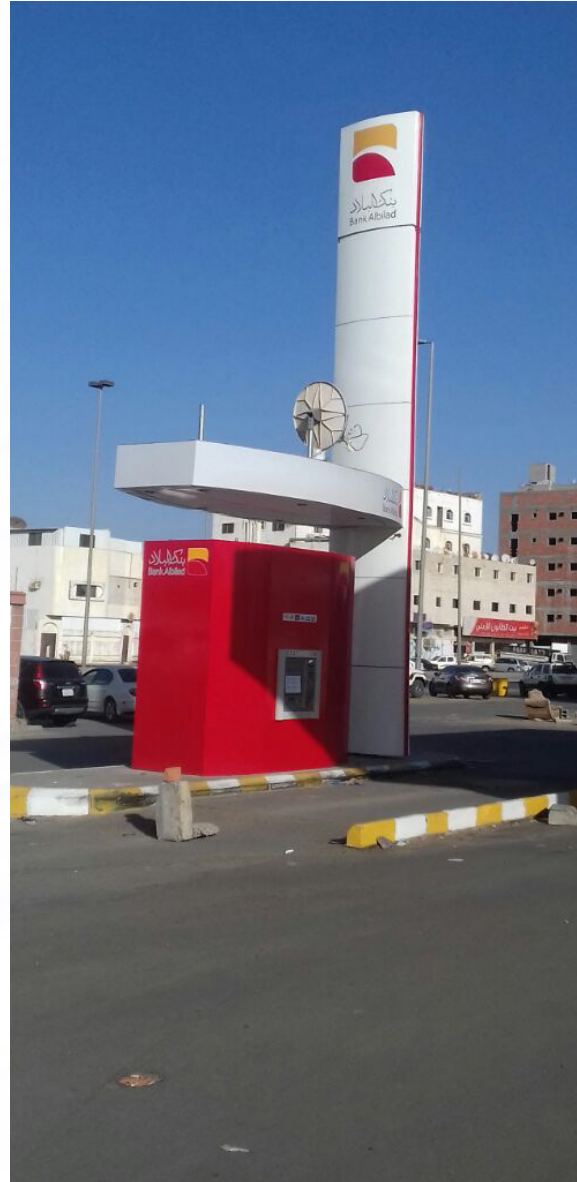
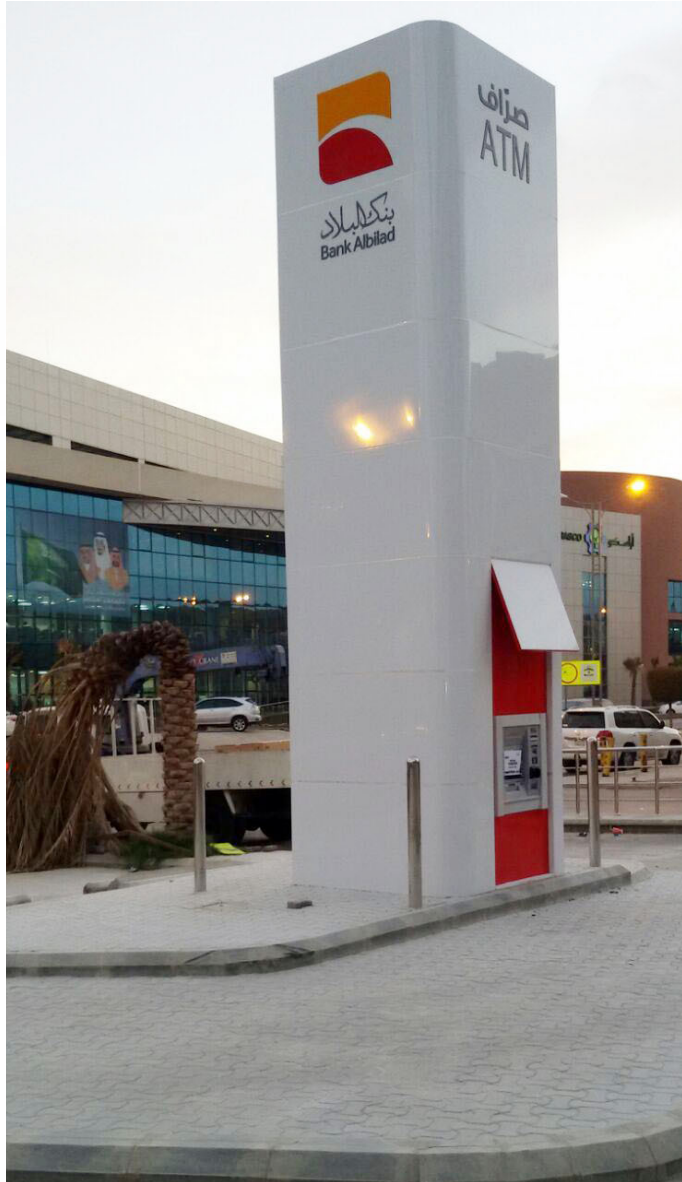
BANK ATM DRIVE THRU



BANK ATM DRIVE THRU



BANK ATM DRIVE THRU



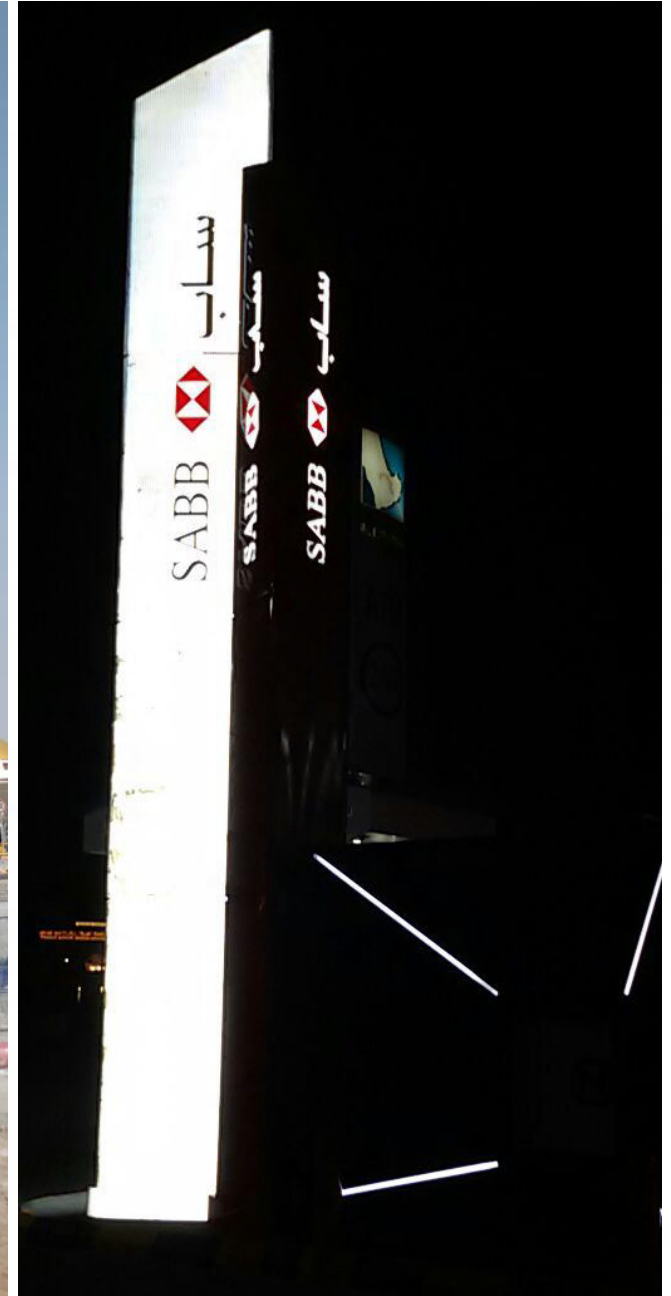
BANK ATM DRIVE THRU



BANK ATM DRIVE THRU



BANK ATM DRIVE THRU



BANK ATM DRIVE THRU



RETAIL SIGNAGES



RETAIL SIGNAGES



WAY FINDING SIGNAGE



INTERIOR DESIGNING & MANUFACTURING



INTERIOR DESIGNING & MANUFACTURING



INTERIOR DESIGNING & MANUFACTURING



EXHIBITION STAND & DISPLAY STAND



EXHIBITION STAND & DISPLAY STAND



SHED & STRUCTURAL WORKS



SHED & STRUCTURAL WORKS



Industrial Licenses

09

GOVERNMENT OF SHARJAH
Economic Development Department

حكومة الشارقة
دائرة التنمية الاقتصادية

شهادة سجل صناعية
Industrial Register Certificate

Barcode

License Details الرخصة

License No.	753279	Registration No.	177041	رقم السجل
Expiry Date	2018/06/01	Issue Date	2017/06/01	تاريخ الإصدار
Capital	400000	رأس المال		

Trade Name AL MUSTADAMAH IND. L.L.C
Legal status Limited Liability Company

الاسم التجاري المستدامة للصناعات ذ م م
الشكل القانوني شركة ذات مسؤولية محدودة

المدير: منور حسين كوندكاري، باريجات موكهبر جي، محمد سليم كوندابور غلام محمد
أنشطة الرخصة: صناعة تركيبات المعارض، صناعة اللوحات المرورية والإرشادية
العنوان: الشارع-الصحيفة الصناعية/الشارقة- خلف شارع الإمارات شيرة رقم 6+5 ملك عبد السلام محمود عبد السلام الشريف
محمد فواد محمود عبد السلام الشريف-أحمد محمود عبد السلام الشريف

Barcode

2017/06/04

49972

رقم الترخيص

رقم الهاتف المتحرك: 0557017447
صندوق البريد: 63144 الشارقة

This document is official. It doesn't need to be stamped or signed.
To view license details please visit SEDD web site: www.sedd.ae
Distribution of flyers is strictly prohibited in public and residential areas. Distribution is allowed through.

هذا الوثيقة رسمية ولا تحتاج لعلامة أو توقيع.
لتفحص من صفة التفصيلات يرجى زيارة موقع الدائرة: www.sedd.ae
- يمنع منعا باتا توزيع الإعلانات في الأماكن العامة والأحياء السكنية. التوزيع فقط عن طريق المصحف، المجلات وصناديق البريد.

GOVERNMENT OF SHARJAH
Economic Development Department

حكومة الشارقة
دائرة التنمية الاقتصادية

رخصة صناعية
Industrial License

Barcode

License Details الرخصة

Issue Date	2017/06/01	تاريخ الإصدار	License No.	753279	رقم الرخصة
Expiry Date	2018/06/01	تاريخ الانتهاء	Registration No.	177041	رقم السجل

Trade Name AL MUSTADAMAH IND. L.L.C
Legal status Limited Liability Company

الاسم التجاري المستدامة للصناعات ذ م م
الشكل القانوني شركة ذات مسؤولية محدودة

أطراف الرخصة License Members

رقم المسثمر	اسم المسثمر	الجنسية	رقم الهوية / الجواز	الصفة	الحصص
Investor No.	Investor Name	Nationality	ID/Passport No.	Type	Shares

انظر الملحق
Investor Detail Refer to the Appendix

Barcode

2017/06/04

49972

رقم الترخيص

رقم الهاتف المتحرك: 0557017447
صندوق البريد: 63144 الشارقة

This document is official. It doesn't need to be stamped or signed.
To view license details please visit SEDD web site: www.sedd.ae
Distribution of flyers is strictly prohibited in public and residential areas. Distribution is allowed through.

هذا الوثيقة رسمية ولا تحتاج لعلامة أو توقيع.
لتفحص من صفة التفصيلات يرجى زيارة موقع الدائرة: www.sedd.ae
- يمنع منعا باتا توزيع الإعلانات في الأماكن العامة والأحياء السكنية. التوزيع فقط عن طريق المصحف، المجلات وصناديق البريد.

Iso Certificates

010



CERTIFICATE

*This is to Certify that the
Quality Management System
of*

Al Mustadamah Ind. L.L.C

PO Box 63144, Emirates Street, Al Saja'a Industrial Area
Sharjah, United Arab Emirates

has been independently assessed and is compliant
with the requirements of

ISO 9001:2015

This Certificate is applicable to the following product or service ranges:

Traffic Signs Manufacturing, Exhibition Stands
Manufacturing

:: Certificate No :: AE109456A

Date of initial registration	12 June 2017
Date of this Certificate	12 June 2017
Recertification Due / Certificate expiry	11 June 2020

This Certificate is property of LMS Certifications and remains valid
subject to satisfactory surveillance audits.


Director



Accreditation



LMS Certifications Private Limited
1-Ananddham, Opp. Kukrail Picnic Spot Gate,
Faridi Nagar, Lucknow - 226015, UP, (INDIA).
e-mail -> info@lmsassessments.com.
Visit -> www.lmsassessments.com.

CB-006-MS



CERTIFICATE

*This is to Certify that the
Environmental Management System
of*

Al Mustadamah Ind. L.L.C

PO Box 63144, Emirates Street, Al Saja'a Industrial Area
Sharjah, United Arab Emirates

has been independently assessed and is compliant
with the requirements of

ISO 14001:2015

This Certificate is applicable to the following product or service ranges:

Traffic Signs Manufacturing, Exhibition Stands
Manufacturing

:: Certificate No :: AE109456B

Date of initial registration	12 June 2017
Date of this Certificate	12 June 2017
Recertification Due / Certificate expiry	11 June 2020

This Certificate is property of LMS Certifications and remains valid
subject to satisfactory surveillance audits.


Director



Accreditation



LMS Certifications Private Limited
1-Ananddham, Opp. Kukrail Picnic Spot Gate,
Faridi Nagar, Lucknow - 226015, UP, (INDIA).
e-mail -> info@lmsassessment.com.
Visit -> www.lmsassessment.com.

CB-006-MS



Commitment to Green Construction

011



ORGANIZATIONAL

AL MUSTADAMAH IND. LLC

MEMBER SINCE JUN 03, 2017

The U.S. Green Building Council is the nation's foremost coalition of leaders working to transform the way buildings and communities are designed, built, and operated, enabling an environmentally and socially responsible, healthy, and prosperous environment that improves the quality of life.

Mahesh Ramanujam

MAHESH RAMANUJAM
President & CEO

Associate Organisation

012



ARTFAB INTERNATIONAL FZC,
RAS AL KHAIMAH, UAE
www.artfab.ae



شركة أبناء صالح يوسف الدوسري
Saleh Yousef Al Dossary
Sons Company



MSD, UNITED KINGDOM
www.wearemsd.com



TEAM ENGINEERING & CONTRACTING CO WLL
www.orbit-team.com



ORBIT TRADING W.L.L, DOHA, QATAR
www.orbit-team.com



NAIF TALAL MUALEB TRADING & CONTRACTING CO ,
KSA
www.ntm.sa

Locations - Gps Coordinates


013

CONTACT

UAE Based Signage Company
Get in touch with us !

Al Mustadamah Ind.

Al saja'a Industrial Area,
P.O. Box : 63144, Sharjah
United Arab Emirates
Tel : +971 6 522 1490 | Fax: +971 6 522 1494
E: info@mustadamah.com | www.mustadamah.com

...we are always happy to hear from you! 
Send your Inquiry to info@mustadamah.com

LOCATION MAP

